

Easy Drain[®]
Shower Drains

Vinyl 

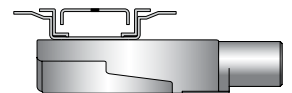


Vinyl – The solution for vinyl floors

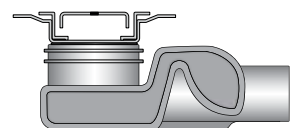
Easy Drain Vinyl is specially designed for use in combination with vinyl flooring. The vinyl can easily be clamped between the drain's grate and build-in set to ensure a complete watertight installation. This way, the frame seamlessly fits into the vinyl floor. The Vinyl linear shower drain is supplied as complete set including: lockable grate, trap body, drainage siphon and height adjustable legs.

COMPLETE SET 
INCL. GRATE

Water seal 28 mm



Water seal 50 mm



Easy Drain® Vinyl

COMPLETE SET
INCL. GRATE



Complete set incl. brushed stainless steel grate

M2-50 Siphon

EN 1253

Water seal 50 mm

100%

I Water seal 28 mm I

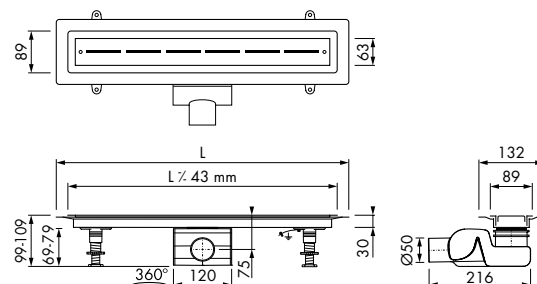
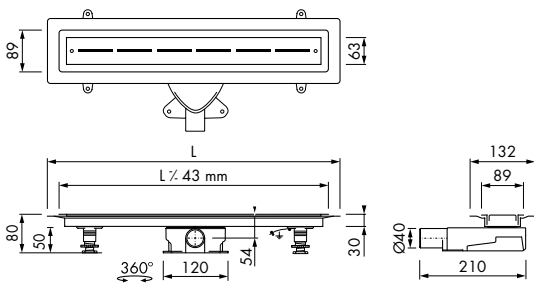


I Water seal 50 mm I



Complete set	Article code
Length 700 mm	EDVIN-M2- 700-35
800 mm	EDVIN-M2- 800-35
900 mm	EDVIN-M2- 900-35
1000 mm	EDVIN-M2-1000-35
1200 mm	EDVIN-M2-1200-35

Complete set	Article code
Length 700 mm	EDVIN-M2- 700-50
800 mm	EDVIN-M2- 800-50
900 mm	EDVIN-M2- 900-50
1000 mm	EDVIN-M2-1000-50
1200 mm	EDVIN-M2-1200-50



Installation options

Capacity water seal

28 mm

28l/min

33l/min

Installation options

Capacity water seal

50 mm

33l/min

41l/min

SEALING AND OTHER ASSEMBLY ACCESSORIES, see "Assembly accessories"

! Wet area - Sealing system
see "Assembly accessories"



10 YEAR WARRANTY

M2 trap body, vertical outlet
Water seal 50 mm



Article code: EDM2-O

