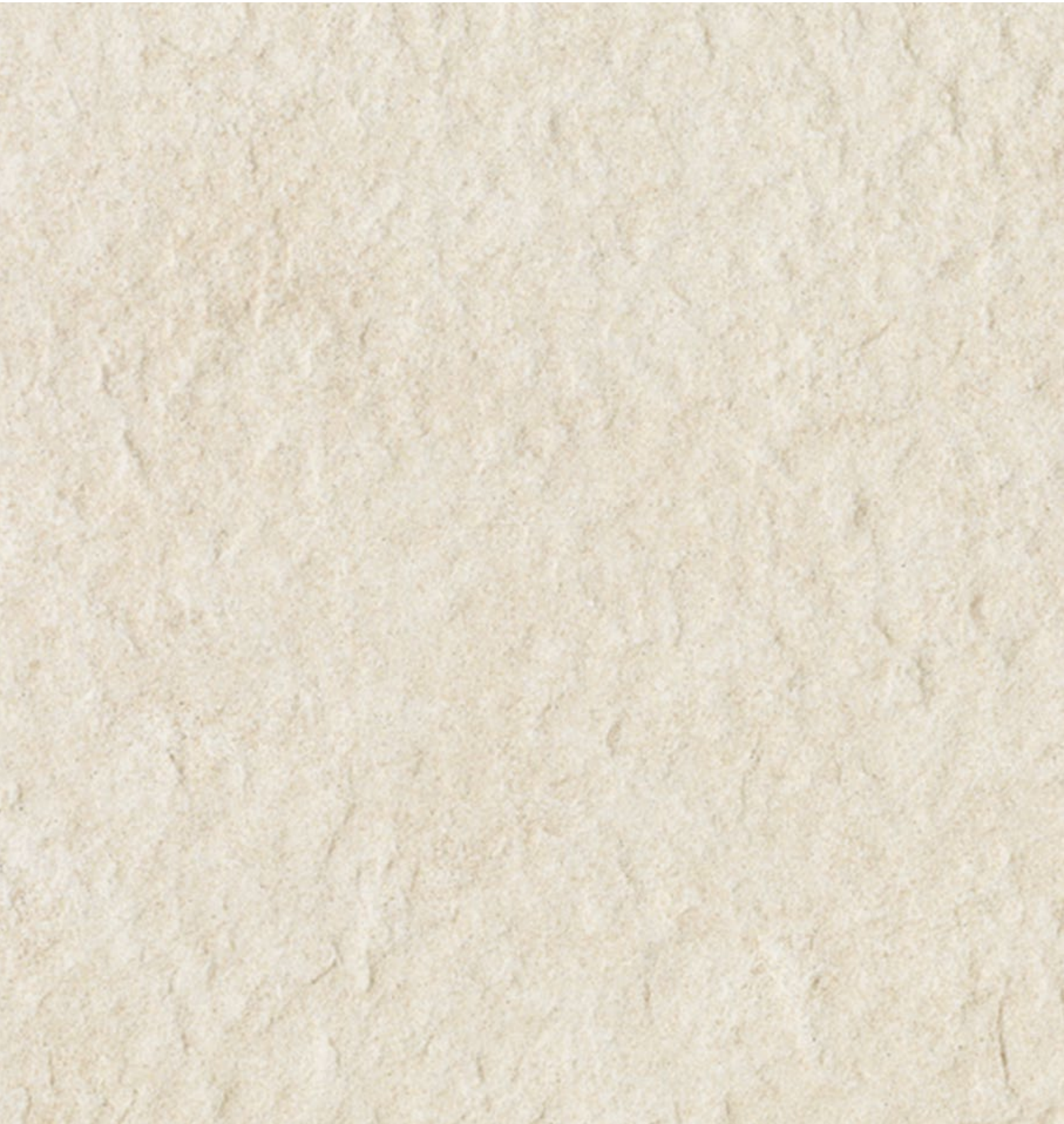
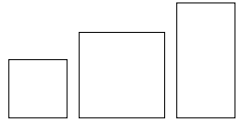


pavimenti . floor tiles . Bodenfliesen . sols . плитка на полна

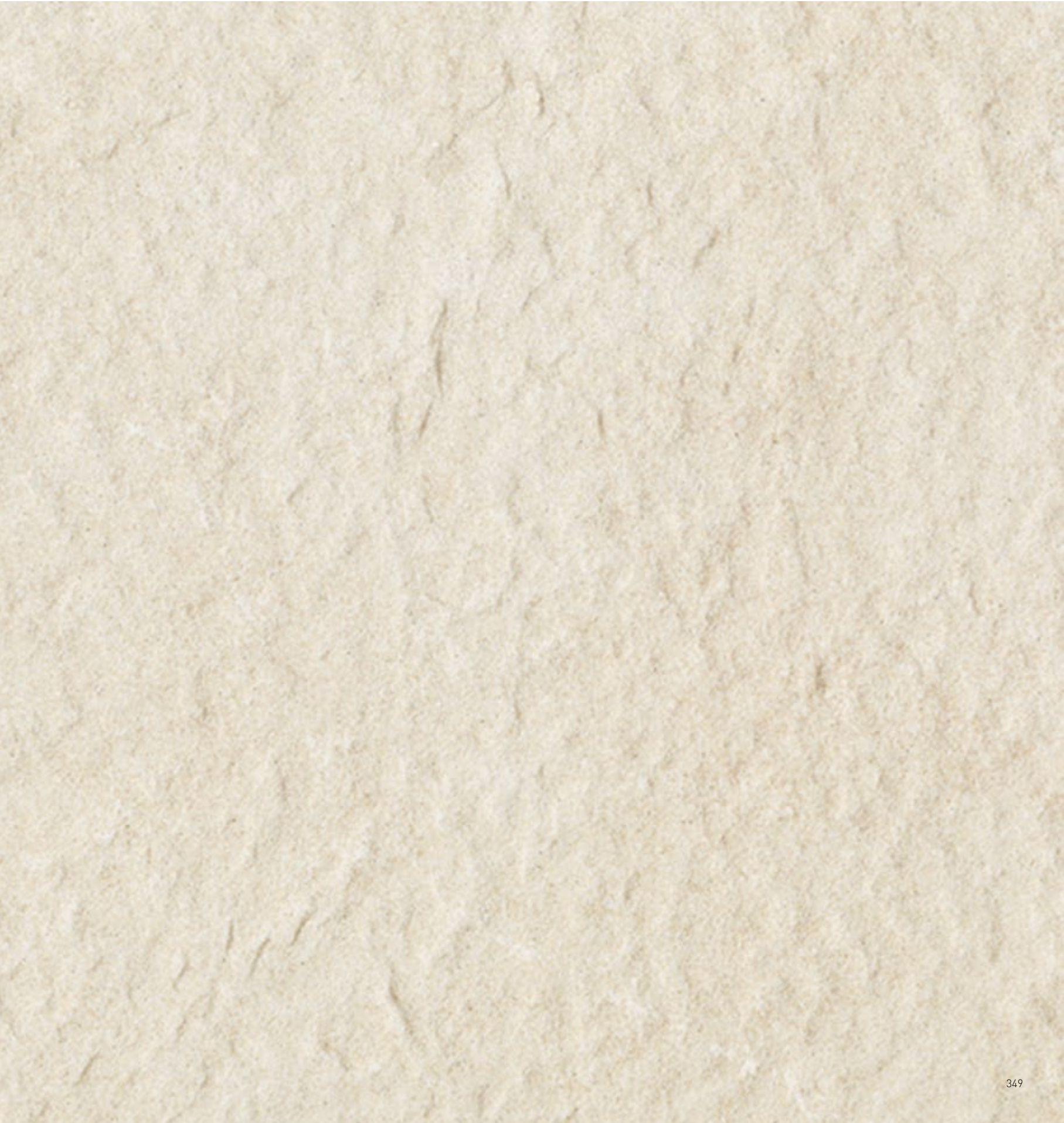


GRES FINE PORCELLANATO AD IMPASTO COLORATO
COLOURED-BODY FINE PORCELAIN STONEWARE
FEINSTEINZEUG AUS FARBIGER MASSE
GRÈS CÉRAME FIN À PÂTE COLORÉE





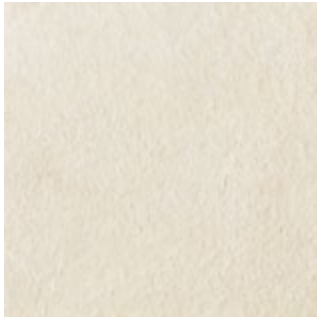
MENHIR







MENHIR NERO 45x45 CM; MENHIR NERO 30x60 CM; MENHIR NERO 30x30



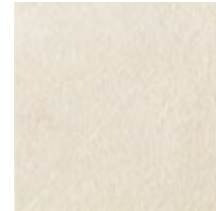
45x45 CM
NGP339* MENHIR BIANCO
01084

V2 37



30x60 CM
NGP334 MENHIR BIANCO

V2 39



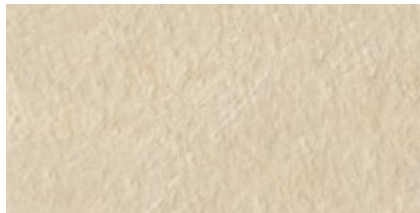
30x30 CM
GP324 MENHIR BIANCO

V2 32



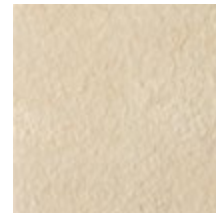
45x45 CM
NGP340* MENHIR BEIGE
00733

V2 37



30x60 CM
NGP335 MENHIR BEIGE

V2 39



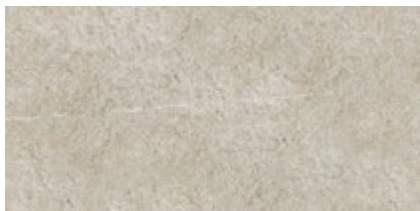
30x30 CM
GP325 MENHIR BEIGE

V2 32



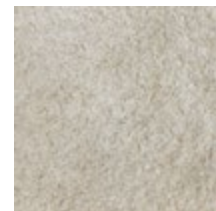
45x45 CM
NGP341* MENHIR GRIGIO
00734

V2 37



30x60 CM
NGP336 MENHIR GRIGIO

V2 39



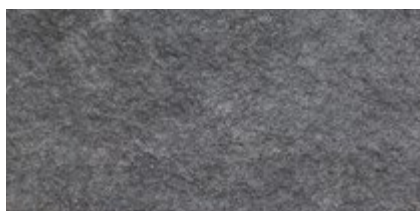
30x30 CM
GP326 MENHIR GRIGIO

V2 32



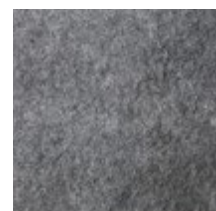
45x45 CM
NGP343* MENHIR NERO
00735

V2 37



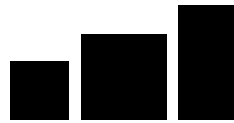
30x60 CM
NGP338 MENHIR NERO

V2 39



30x30 CM
GP328 MENHIR NERO





V2 32



30x30 12"x12"
30x60 12"x24"
45x45 18"x18"

MENHIR

► PEZZI SPECIALI
SPECIAL ITEMS
FORMSTÜCKE
PIÈCES SPÉCIALES

COLORE COLOUR FARBE COULEUR	 BATTISCOPA 8x30 CM - 3 1/8" x 12"	 BATTISCOPA 8x45 CM - 3 1/8" x 18"	 GRADINO 30x30 CM - 12" x 12"	 ELEMENTO L 15x30 CM - 6" x 12"
MENHIR BIANCO	GPB60	GPB091	GPG346	GP329
MENHIR BEIGE	GPB61	GPB092	GPG347	GP330
MENHIR GRIGIO	GPB62	GPB093	GPG348	GP331
MENHIR NERO	GPB64	GPB095	GPG350	GP333


► CERTIFICATI PROVE SCIVOLOSITÀ
SLIP RESISTANCE
RUTSCHFESTIGKEIT
RÉSISTANCE À LA GLISSANCE

COLORE COLOUR FARBE COULEUR	SUPERFICI SURFACES OBERFLÄCHEN SURFACES	DIN 51130
MENHIR BIANCO	NATURALE	
MENHIR BEIGE	NATURALE	
MENHIR GRIGIO	NATURALE	R11
MENHIR NERO	NATURALE	

! per una migliore resa estetica si consiglia stuccature colorate in tinta con le piastrelle.
for a better aesthetic finish, it is recommended using jointing colours that match the tiles.
für ein optisch perfektes Ergebnis empfiehlt piemme, die Fugen farblich auf die Fliesen abzustimmen.
pour parfaire l'effet esthétique obtenu, on conseille de confectionner des joints de la même couleur que les carreaux.

! per un migliore risultato di posa, consigliamo una fuga di 2 mm.
for better installation results, we suggest 2 mm joint.
damit sich eine bessere Verlegung ergibt, empfehlen wir eine Fugenbreite von 2 mm.
pour obtenir le meilleur résultat au cours de la pose, il est conseillé de réaliser un joint de 2 mm.

► IMBALLO
PACKING
VERPACKUNG
EMBALLAGE

FORMATI SIZES FORMATE FORMATS		MM 	PEZZI/SCATOLA PIECES/BOX STCK/KARTON CARREAUX/BOÎTE	MQ/SCATOLA SQMT/BOX QM/KARTON M²/BOÎTE	KG/SCATOLA KGS/BOX KG/KARTON KG/BOÎTE	SCATOLE/PALETTA BOXES/PALLET KARTON/PALLET BOÎTE/PALETTE	MQ/PALETTA SQMT/PALLET QM/PALLET M²/PALETTE	KG/PALETTA KGS/PALLET KG/PALLET KG/PALETTE	FORMATO PALETTA SIZE PALLET FORMAT PALLET DIM. PALETTE
45x45*	P	9,5	6	1,2150	22,50	33	40,10	742	80x120x60
45x45	P	9,5	5	1,0125	20,40	66	66,82	1346	80x120x105
30x60	P	9,5	6	1,0800	22,00	48	51,84	1056	80x120x75
30x30	P	9,5	12	1,0800	22,60	48	51,84	1085	80x120x75
8x30 BATTISCOPA	P	9,5	33	0,7920/ML 9,90	15,00	-	-	-	-
8x45 BATTISCOPA	P	9,5	30	1,0800/ML 13,50	23,30	-	-	-	-
30x30 GRADINO	P	9,5	12	1,0800	17,40	-	-	-	-
15x30x3,5 ELEM. L	P	9,5	8	0,3600	7,00	-	-	-	-

* **Attenzione:** l'imballo del formato 45x45 può essere da 5 o 6 pezzi. Verificare in fase di ordine.

Attention: the packing of size 45x45 could be 5 pieces in box or 6 pieces in box. Kindly check while ordering.

Achtung: die Verpackungen vom Format 45x45 können entweder 5 oder 6 Stk. enthalten. Bitte prüfen Sie es bei jeder Bestellung.

Attention: le conditionnement du format 45x45 peut être de 5 ou 6 pièces par boîte. Merci de vérifier en phase de commande s'il vous plait.